

# Rotary Paddle Switch Solids | Gas & Dust Explosion-Proof



## Spin-11 Rotary Paddle Switch

### Overview

The Spin-11 rotary paddle switch is a highly reliable industrial material level control device, widely used for automatic detection and control of extreme levels in silos containing powdery, granular, or block materials.

### Principle

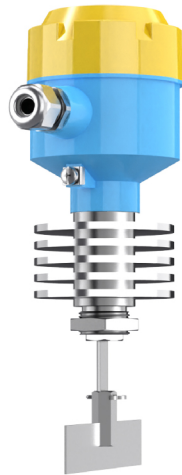
The rotating paddle contacts the material to detect its presence or absence, enabling level detection and control.

### Benefits

- **High-level protection:** Fully dustproof and waterproof, certified for gas and dust explosion protection.
- **Premium materials:** Made of 304 or 316L stainless steel, offering excellent corrosion resistance and durability.
- **Innovative design:** Integrated anti-loosening structure for easy replacement and maintenance; dual bearing design ensures smoother operation and longer service life.
- **Proprietary technology:** Outperforms most products on the market with a lifespan three times longer.

\*Patent: 201520332293.3

## High-Temp & Explosion-Proof



## Guard



<b>Applications</b>	<ul style="list-style-type: none"> <li>Suitable for measuring granular materials like wood chips, feed, grains, sand, ore, fly ash, resin, rubber, and plastics. It operates reliably in harsh conditions such as high temperature and dust.</li> </ul>	
<b>Measurement Medium</b>	Solid granular powders $\geq 0.3 \text{ g/cm}^3$	Powders and fine granules $\geq 0.3 \text{ g/cm}^3$
<b>Process Temp</b>	Normal temperature: $-20 \sim 70^\circ\text{C}$ High temperature: $-20 \sim 400^\circ\text{C}$	
<b>Operating Voltage</b>	24V DC, 220V AC 50/60Hz	
<b>Material</b>	Aluminum alloy, 316L/304	
<b>Process Connection</b>	Flange (standard/thin), thread, customizable	
<b>Various paddles</b>	Sickle type, foldable type, paddle type, straight blade type	
<b>Process Pressure</b>	Atmospheric pressure	
<b>Qualifications &amp; Certifications</b>	<ul style="list-style-type: none"> <li><b>Explosion Protection:</b> Flameproof Enclosure -----Ex db IIC T6~T1 Gb Flameproof Enclosure -----Ex tb IIIC T80°C~T440°C Db Gas/Dust Explosion-proof -----Ex db IIC T6~T1 Gb + Ex tb IIIC T80°C~T440°C Db</li> <li><b>Ingress Protection:</b> IP65</li> </ul>	